



PORTLAND PARKS & RECREATION

Healthy Parks, Healthy Portland

A Partnership Since 1985



Our Goals for Today

Information about FOT and Terwilliger Parkway

Challenges for Terwilliger Parkway Today

Partnership & Advocacy Activities

How can FOT help Parks?

Friends of Terwilliger

- An all-volunteer, registered 501(c)(3) nonprofit organization
- Dedicated to preserving and enhancing the Parkway and its surrounding environment through:
 - Advocacy
 - Natural Area Restoration
 - Education and Outreach

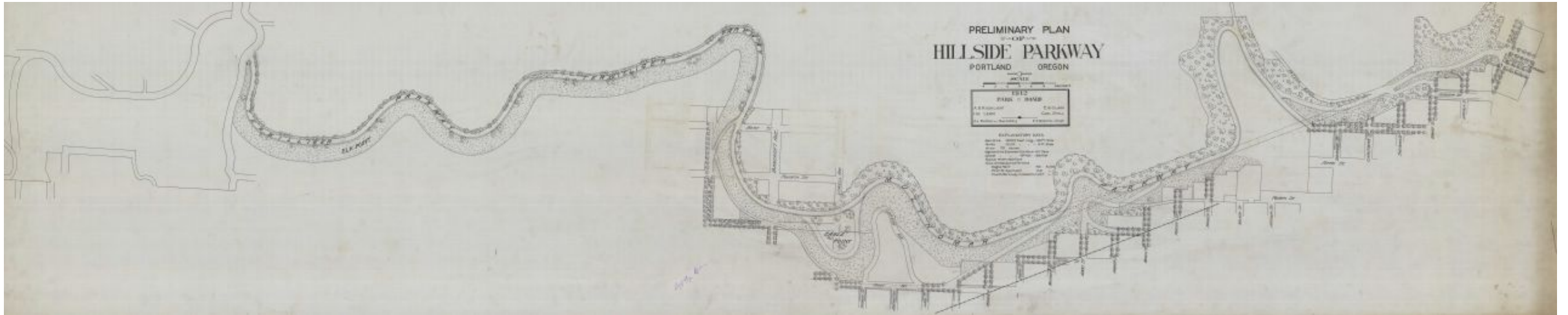




Definitions & Distinctions

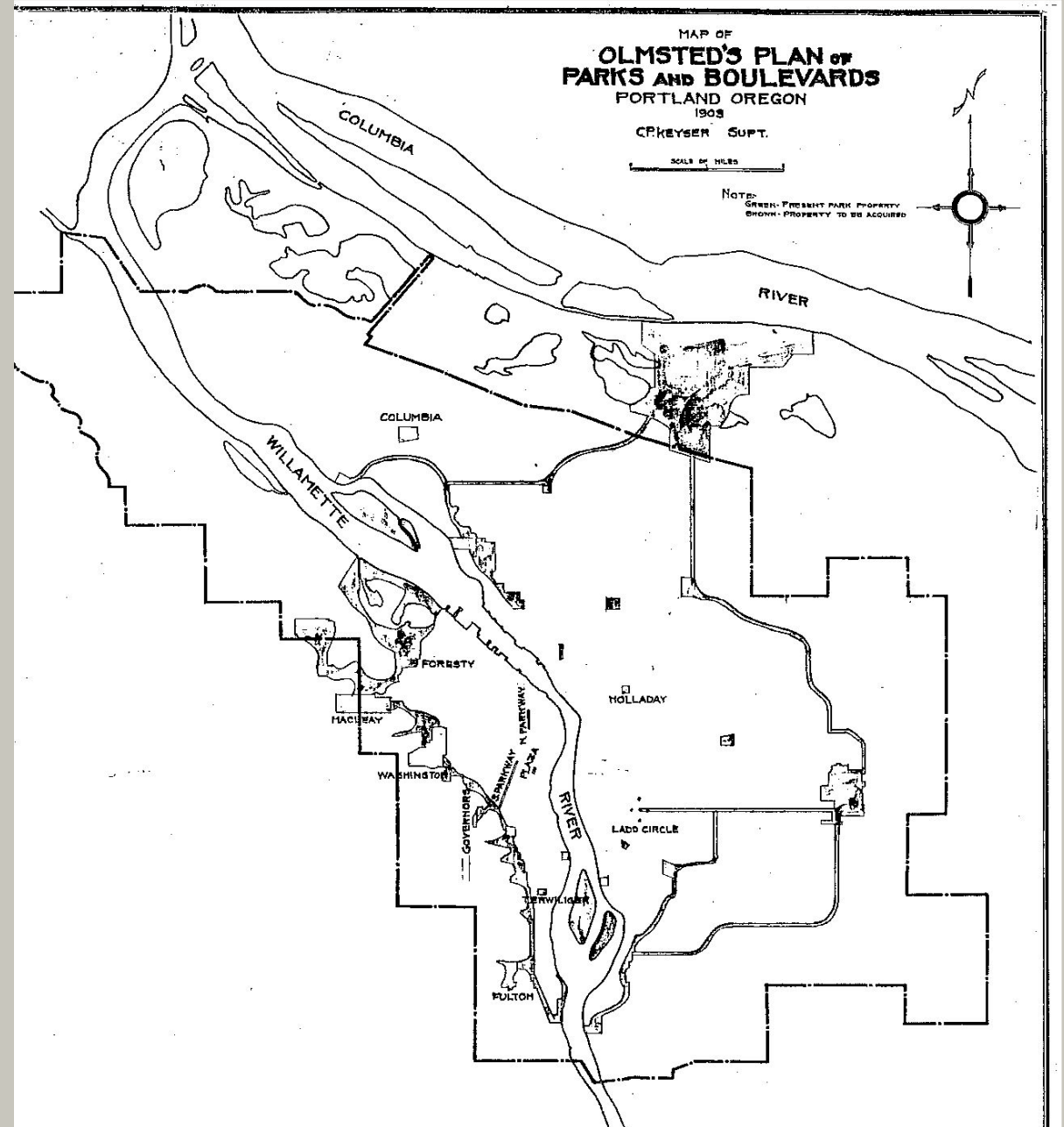
- Parkway: PP&R property; a 2.5 mile linear park
- Boulevard: roadway/right-of-way through park
- historic segment: Sheridan St. to Capitol Hwy.
- design district: Sheridan St. to Barbur Blvd.
- other connected parks: Duniway Park, Marquam Nature Park, Keller Woodlands, George Himes Park
- Marquam Trail/40 Mile Loop Trail

Terwilliger Parkway: A Rich History



Elks Convention Procession, 1912

- James Terwilliger
 - early settler
- Olmsted Brothers
 - designers
- Emanuel T. Mische
 - designer & park superintendent



A long history of parkway protections



First FOT event, 1982 (?)

1925-28: Ordinances restricting development within 200 ft. of parkway

1953: First Portland design district designated along Terwilliger Parkway

1983: Terwilliger Parkway Corridor Plan and Design Guidelines adopted

Challenges for Terwilliger Parkway:

- Excessive Traffic and speeds
- OSHU & VA Hospital complex
- PBOT jurisdiction over roadway
- Other City Bureaus
- Invasive plants



Partnerships: FOT, PP&R, and others:

- Helped protect over 169 acres since 1994
- First friends group to sign stewardship agreement with PP&R
- Each year FOT contributes over 2,000 volunteer hours to PP&R
- 11 volunteer work parties per year, + ACS crews
- 16+ acres cleared and 3886 trees freed
- West Willamette Restoration Partnership participant
- Yearly public outreach event, website, newsletters, & social media
- Advocacy to protect parkway from inappropriate development and activities



FOT Projects: National Historic District Nomination



John Charles Olmsted



Frederick Law Olmsted Jr.



FOT Projects: View Restoration and Maintenance



“Periodically highlighted by expansive city and mountain views, the winding boulevard narrows dramatically into the enclosing fold of constrictive forest.”

- Wallace K. Huntington

FOT Projects: Gateway Signs



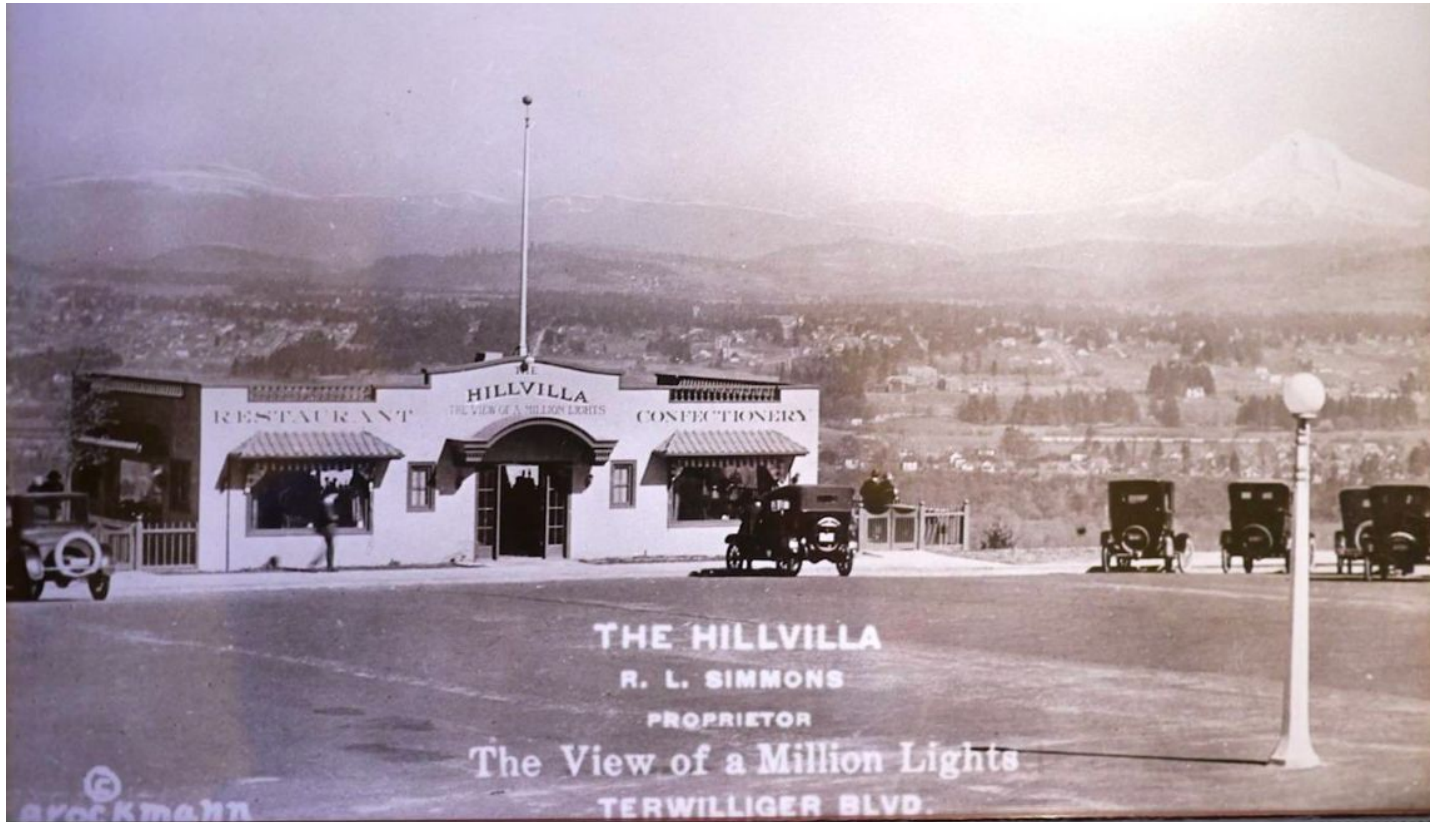
North Gateway Sign, as built in 2012



Complete Gateway Sign as designed

Two more gateway signs proposed: at SW Capitol Hwy. and at SW 7th Ave.

FOT Projects: Streetlight Replacement and Restoration



Original streetlight where Chart House now stands, 1915



Light poles under construction

FOT Advocacy: Marquam Hill Connector - 1

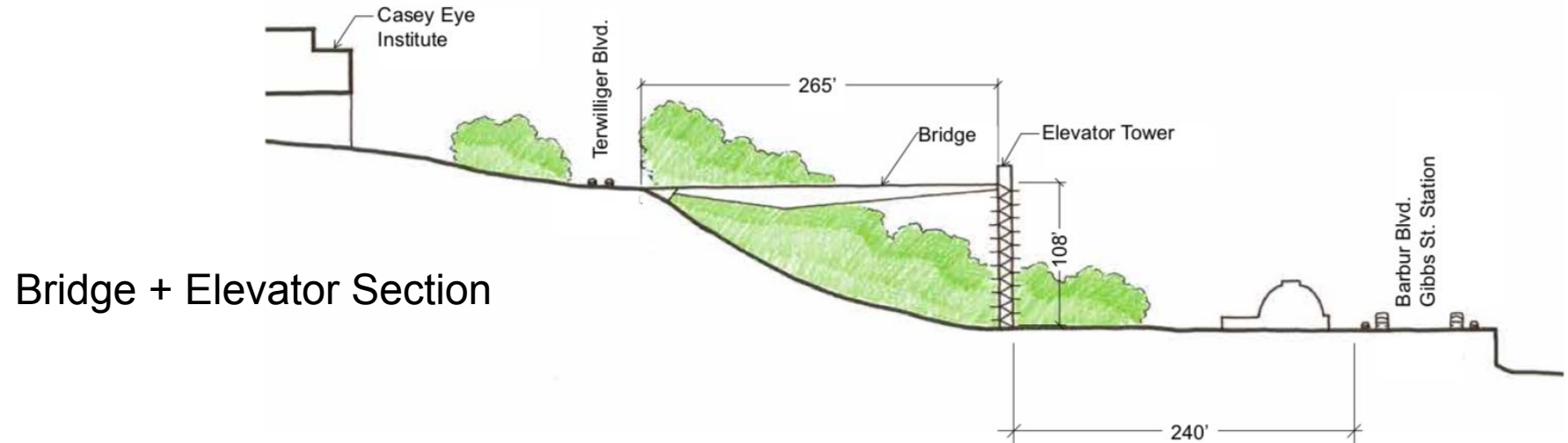
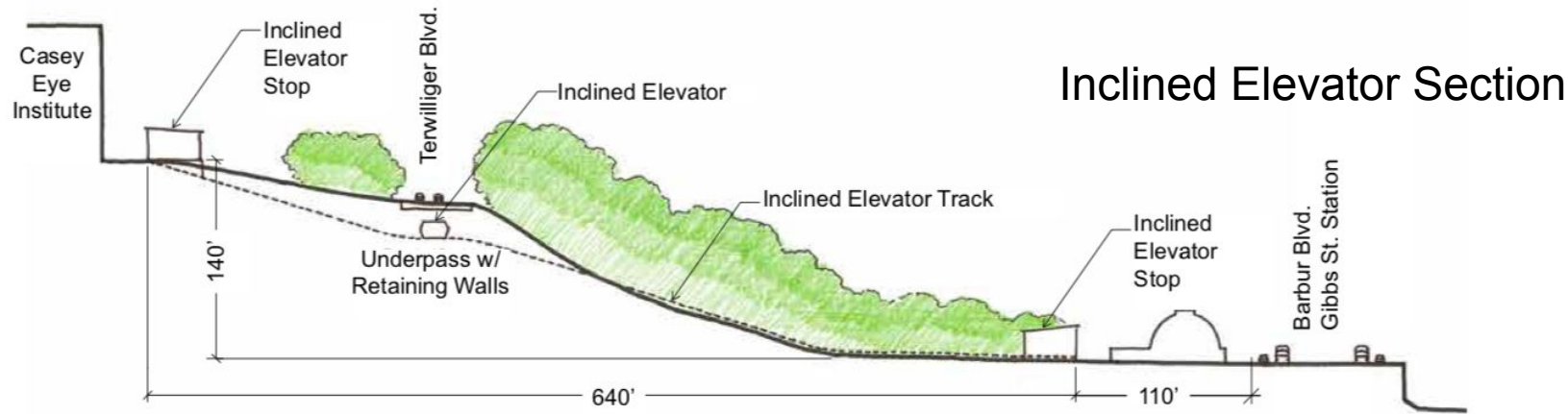


Inclined Elevator option, aerial view



Bridge + Elevator option, Terwilliger view

FOT Advocacy: Marquam Hill Connector - 2



How Can FOT
Help PP&R to
Maintain
Terwilliger
Parkway for
Another 100
Years?



Terwilliger Centennial Celebration and gateway sign unveiling, 2012